



Crowds enjoy music from around the globe at Bloomington's Lotus World Music and Arts Festival.

# Arts & Entertainment

MUSEUMS, GALLERIES, PERFORMANCES AND MORE! IN BLOOMINGTON, THE ARTS ARE ALWAYS IN SEASON.

## Museums & Historical Sites

Look for additional museums in the Indiana University section of this guide. Contact the Bloomington Visitors Center at 800-800-0037 or go to [visitbloomington.com](http://visitbloomington.com) to request your Museum Guide.

### Hinkle-Garton Farmstead Community Historic Site

One of Bloomington's last historic farmsteads, this property includes the main farmhouse, a Queen Anne style home built in 1892, several outbuildings, a second home built around 1910 and farming artifacts. The site is operated by Bloomington Restorations, Inc. **2920 East 10th Street • 812-336-0909** [www.bloomingtonrestorations.org](http://www.bloomingtonrestorations.org)

### Monroe County History Center

Explore three galleries, a genealogy library, and a museum store featuring many items related to Monroe County and Indiana heritage. Learn about Bloomington's limestone heritage and other early industries or explore a one-room schoolhouse and pioneer cabin. Changing exhibits and special programs run throughout the year. Admission is charged. **202 East 6th Street • 812-332-2517 • www.monroehistory.org**

### Rose Hill Cemetery

Rose Hill Cemetery is the final resting place of many prominent Bloomington citizens. Jazz aficionados often visit the gravesite of Hoagy Carmichael and leave pennies stuck into the grooves on top of the stone. Self-guided tours are available at the cemetery office. **930 West 4th Street 812-349-3498, cemetery office**

### WonderLab Museum of Science, Health & Technology

Located on the B-Line Trail and rated one of the Top 25 science centers in the country, WonderLab offers two floors of exciting hands-on experiences for all ages. Admission is charged for the galleries, but not for the gift store. The museum and garden are available for private events. **308 West 4th Street • 812-337-1337 • www.wonderlab.org**

## Unique Cultures

For more cultural center listings, see the Indiana University section.

### Dagom Gaden Tensung Ling Monastery

Founded in 1996, the DGTL is a traditional monastery for monks of the Gelugpa lineage of Tibetan Buddhism and also serves as a community resource offering a wide array of religious, cultural and educational programs to the public, including the bi-annual Taste of Tibet. **102 Clubhouse Drive, in Lower Cascades Park • 812-339-0857 • www.ganden.org**

### El Centro Comunal Latino (Latino Community Center)

El Centro Comunal Latino is a community-based organization that seeks to provide an accessible and safe place for all Latinos, with a focus on Spanish-speaking people, to find information, access resources and hold community events. **Inside the Monroe County Library • 303 East Kirkwood Avenue • 812-355-7513 • www.elcentrocomunal.org**

### Tibetan Mongolian Buddhist Cultural Center

Established by Indiana University Professor Emeritus Thubten J. Norbu in 1979, the TMBCCC strives to preserve Tibetan and Mongolian cultures and Buddhist philosophy through education and philanthropic endeavors, and to support Tibetans and Mongolians both in their homelands and in exile. Highlights include the Kumbum Chamtse Ling Temple and the only chortens in the western hemisphere. **3655 South Snoddy Road • 812-331-0013 • www.tibetancc.com**

## Art Galleries

Bloomington is home to a wide variety of art galleries, several of which participate in a downtown area Gallery Walk several times each year. The 2011 Gallery Walk dates are February 4, April 1, June 3, August 5, October 7 and December 2.

### Bellevue Gallery

Located inside the lobby of The Bloomington Playwrights Project Theatre, Bellevue is a not-for-profit cooperative gallery that exists to promote and enhance the area's educational and cultural experiences by supporting emerging and established local and regional artists. **Inside the Bloomington Playwrights Project Theatre • 107 West 9th Street • 812-349-4242 • www.bellevuegallery.org**

### By Hand Gallery

This local artists' cooperative, together for more than 30 years, boasts the largest collection of locally made contemporary crafts in the area. Highlights include jewelry, hardwood furniture and accessories, pottery, blown glass, hand-woven goods, leather, prints, photography and more. **Inside Fountain Square Mall • 101 West Kirkwood, Suite 109 812-334-3255 • www.byhandgallery.com**

### gallery406 - Spectrum Studio of Photography & Design

gallery406 showcases local and regional artists focusing on, but not limited to, photography. The gallery features the work of Kendall Reeves with additional artists rotating every two months. **406 South Walnut Street • 812-333-0536** [www.spectrumstudioinc.com](http://www.spectrumstudioinc.com)

### Gallery North on the Square

Located in the historic Wicks Building, Gallery North presents the works of local and regional artists. Ranging in style from traditional to contemporary, this gallery includes metal and limestone sculpture, paintings, photography, ceramics, printmaking and more. A not-for-profit cooperative gallery. **116 West 6th Street • 812-339-5729** [www.gallery-north.org](http://www.gallery-north.org)

### Glorious Moments Gallery

This quaint and eclectic gallery features original works from local and internationally renowned artists. The collection includes Edward Curtis's photogravures, stained-glass windows, artwork of 1960's icons Jerry Garcia and Wavy Gravy, jewelry by Lynn Svensson, and a rotating gallery every two months. **109 East Kirkwood Avenue • 812-287-8212** [www.gloriousmoments.com](http://www.gloriousmoments.com)

### Ivy Tech John Waldron Arts Center

The Ivy Tech Waldron has six art galleries featuring local and national artists in every medium. The Miller Gallery and the Treasurer's Gallery are beloved for their light. The Education Gallery has beautiful Zen-like symmetry. The Vault Gallery, created inside an actual bank vault, specializes in tiny art shows. The Video Gallery projects images and sound, and the cozy Flashlight Gallery is a favorite for visitors to the Waldron's busy Auditorium. **122 South Walnut Street 812-330-4400 • www.ivytech.edu/bloomington/waldron**

## USA International Harp Competition

Bloomington may seem like an unlikely place to hold an international harp competition, but every three years, the harp world descends on this small town to listen to the world's best up and coming harpists. This competition is one of the most prestigious in the world, and the winner is awarded a large prize including a gold harp and the opportunity to tour the world performing as champion. This year, the Champion's tour will make a stop in Bloomington in the fall, providing a world-class harp experience. The USA International Harp Competition is headquartered in Bloomington because of legendary harpist and USAIHC founder Susann McDonald, who heads the renowned harp department at the IU Jacobs School of Music, the largest university harp department in the world. [www.usaihc.org](http://www.usaihc.org)



PHOTO BY ALAIN BARKER

## Q & A with Peter Jacobi

### Q. What makes Bloomington so special?

**A.** Ours amazingly is about a dozen times greater in scope and variety than one would expect in a city of Bloomington's size. It consistently thrills me to experience it.

### Q. Describe the music scene in Bloomington.

**A.** Not only the variety of availabilities but the high quality of so much that is performed. This place is a musical mecca.

### Q. What's your favorite local musician/group or music venue?

**A.** Because of my responsibilities, which are to cover classical music for the Herald-Times as reviewer and columnist, I favor wherever such music is performed, much of it by ensembles and soloists on campus, particularly in the Musical Arts Center and Auer Hall.

### Q. Besides enjoying music, what's your next favorite thing to do in Bloomington?

**A.** Because I lived most of my pre-Bloomington years in metropolitan areas, I enjoy the natural environment and the atmosphere of a small (and college) town.

### Q. If you could recommend one thing for a visitor to experience while in town, what would it be?

**A.** An opera, ballet, orchestral, chamber, or choral concert, of which there are so many. Where else, save in the far bigger and biggest cities, are you going to find the equivalent?



*Peter Jacobi is an emeritus professor in the IU School of Journalism, and a contributing writer or editor for a variety of magazines and newspapers, including the Bloomington Herald-Times newspaper where he is the music critic and columnist.*

### Pictura Gallery

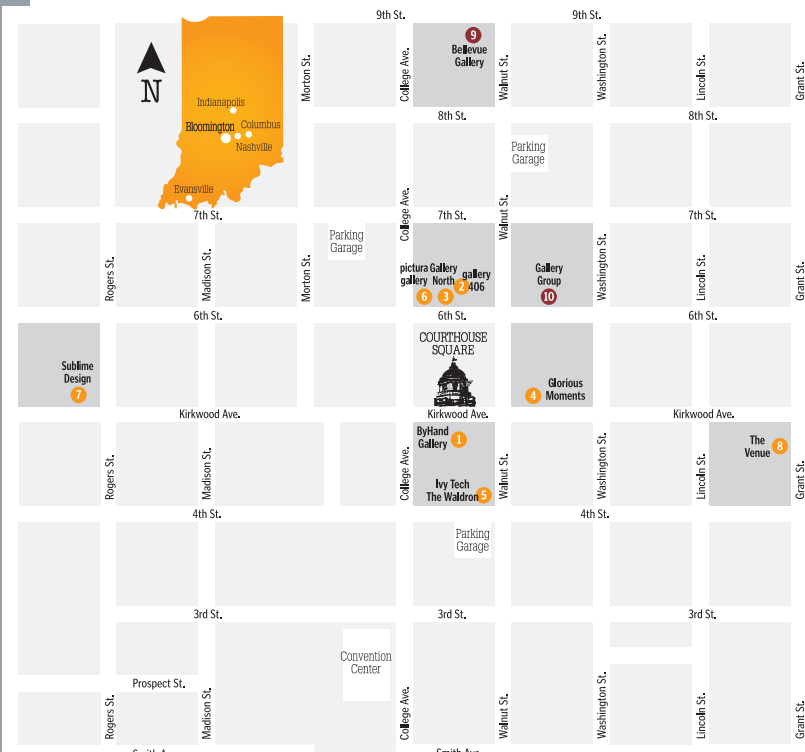
On the northwest corner of the downtown square, this gallery focuses on fine photographic art, featuring local, regional, national and international photographers. **122 West 6th Street 812-336-0000 • [www.picturagallery.com](http://www.picturagallery.com)**

### Sublime Design

Sublime Design is a fine art gallery and teaching space. The gallery highlights new artists and has special events every month. In addition to the gallery, the back room displays vintage furniture, jewelry and art. Carol Hedin, owner and artist, specializes in custom epoxy tables and stained glass. Custom orders are welcome. **514 West Kirkwood Avenue 812-335-3524 • [www.mysublimedesign.com](http://www.mysublimedesign.com)**

### The Venue Fine Arts & Gifts

The Venue is a gallery featuring local, regional and national works of art in downtown Bloomington. You'll find a wide variety of works ranging from watercolors, oils, prints, functional pottery, wooden bowls, jewelry, leather products, gift cards and more. There's something wonderful for everyone at The Venue. **114 South Grant Street • 812-339-4200 [www.thevenuebloomington.com](http://www.thevenuebloomington.com)**



## 2011 Guide to the Galleries

**Stroll the Downtown Gallery Walk any time of the year!** Special Gallery Walk receptions [First Fridays] are February 4, April 1, June 3, August 5, October 7, and December 2, from 5-8pm.

Visit [www.visitbloomington.com](http://www.visitbloomington.com) or [www.gallerywalkbloomington.com](http://www.gallerywalkbloomington.com) for up-to-date information about Gallery Walk Events.



**1 By Hand Gallery**  
101 W Kirkwood Ave  
#109 Fountain Square Mall  
[812] 334-3255  
[www.bloomington.in.us/~byhand](http://www.bloomington.in.us/~byhand)  
[byhandbloomington@gmail.com](mailto:byhandbloomington@gmail.com)  
Hours: Mon-Sat 10-5:30

Linda Knudson/Ruth Conway Located inside Fountain Square Mall, By Hand Gallery is a 30 year young fine crafts cooperative showing the work of local, regional and national artists. We feature jewelry, pottery, knitting, weaving, wood, glass, photography, paintings and more.



**2 gallery406**  
Spectrum Studio of Photography & Design  
Inside the Wicks Building  
116 W 6th St  
[812] 333-0536  
[www.spectrumstudioinc.com](http://www.spectrumstudioinc.com)  
Hours: Mon-Fri 9-6, First Fridays 9-8, Sat 11-6

Kendall Reeves gallery406 showcases local and regional artists focusing on, but not limited to, photography. The gallery features the work of Kendall Reeves with additional artists rotating every two months.



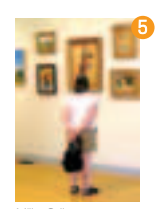
**3 Gallery North on the Square**  
The Wicks Building  
116 W 6th St  
[812] 339-5729  
[www.gallery-north.org](http://www.gallery-north.org)  
Hours: Wed-Sat 11-6 or by appt.

Cathy Korinek A fine art gallery on the north side of the courthouse square featuring the work of local and regional artists with frequently changed exhibits in watercolor, oil, acrylic, and mixed media paintings, sculpture, photography, ceramics, jewelry, and fiber art. Gallery North hosts guest artists and special exhibits throughout the year.



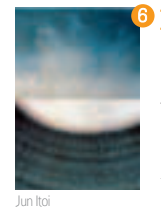
**4 Glorious Moments Fine Art Gallery**  
109 E Kirkwood Ave  
[812] 287-8212  
[www.gloriousmoments.com](http://www.gloriousmoments.com)  
Hours: Wed-Thurs 11-6, Fri-Sat 11-8, open for private appts.

Jerry Garcia Glorious Moments exhibits an eclectic art collection featuring original artwork by local and international artists that includes paintings, prints, stained glass, jewelry, Russian miniature lacquer art, sculpture, ceramics, photographs, textiles, antique rugs. The gallery features an extensive collection of Edward Curtis photogravures and Jerry Garcia prints available.



**5 Ivy Tech John Waldron Arts Center Galleries**  
122 S Walnut St  
[812] 330-4400  
[www.ivytech.edu/bloomington/waldron](http://www.ivytech.edu/bloomington/waldron)  
Hours: Mon-Fri 9-7

Miller Gallery The Ivy Tech John Waldron Arts Center houses a unique blend of artists, performers, and educators. At the Ivy Tech Waldron, you can see a play, catch a concert, cruise multiple art galleries, and even sign up to take art classes. Five art galleries open now, with a sixth coming in 2011.



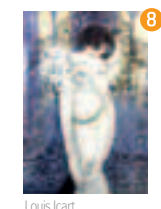
**6 pictura gallery**  
122 W 6th St  
[812] 336-0000  
[www.picturagallery.com](http://www.picturagallery.com)  
Hours: Tues-Sat 11-7

Jun Itoi Located on the courthouse square at the corner of 6th and College, pictura gallery specializes in fine photographic art. Exhibits showcase work by acclaimed local, national and international artists. Styles range from contemporary to traditional.



**7 Sublime Design Gallery and Gifts**  
514 W Kirkwood Ave  
[812] 335-3524  
[www.mysublimedesign.com](http://www.mysublimedesign.com)  
[carolsublimedesign@yahoo.com](mailto:carolsublimedesign@yahoo.com)  
Hours: Tues-Sat 11-7, Sun 12-5

Sublime Design is a fine art gallery and teaching space. We offer classes by local artists, children's art classes, and children's birthday parties. Carol Hedin, owner and artist specializes in custom epoxy tables and stained glass. The gallery highlights new artists and has special events every month. In addition to the gallery, the back room displays vintage furniture, jewelry, and art. Check our web page for more info.



**8 The Venue, Fine Arts & Gifts**  
114 S Grant St  
[812] 339-4200  
[www.TheVenueBloomington.com](http://www.TheVenueBloomington.com)  
[Venue.Colman@gmail.com](mailto:Venue.Colman@gmail.com)  
Hours: Tues-Sat 11-7, Sun 12-5

Louis Icart The Venue brings you original, award winning oil, acrylic, and watercolor paintings, and limited edition prints from acclaimed local, regional, national, and international artists. Also showcased is a wide array of uniquely crafted jewelry, pottery, glass, and metal/mineral sculpture.

### Auxiliary Galleries

**9 Bellevue Gallery**  
107 W 9th St  
[812] 349-4242  
[www.bellevuegallery.org](http://www.bellevuegallery.org)  
Hours: Mon-Fri 10-4, weekends subject to theater activity

**10 Gallery Group**  
109 E 6th St  
[812] 334-9700  
[www.gallerygroup.org](http://www.gallerygroup.org)  
Hours: Mon-Fri 9-5

**BUSKIRK-CHUMLEY THEATER**

MUSIC • THEATRE • FILM COMMUNITY

114 East Kirkwood Avenue • (812) 323 3020  
[www.buskirkchumley.org](http://www.buskirkchumley.org)

## Culinary Arts

Bloomington is home to a variety of culinary attractions, so try your hand at cooking, taste unique wines made from Indiana grapes, or tour the production facility of an award-winning micro-brewery.

### Bloomington Brewing Company (BBC)

The BBC has been brewing their widely acclaimed ales on 10th Street since 1994. Their beers are available at (sister company) Lennie's and also at dozens of restaurants and watering holes all over town. Half-gallon and quart growlers, filled directly from the taps, are available for carry-out at Lennie's, and the big news is that carry-out craft brewed beer is now available on Sundays. Tours available. Talk to the staff at Lennie's for more info. **1795 East 10th Street • 812-323-2112 • www.bbcbloomington.com**

### Bloomington Cooking School

You'll find a wide variety of classes from the "Secrets of Wonderful Sauces" to "Fun with Phyllo," taught throughout the year by some of the area's best-known chefs. Healthy cooking, fresh pasta, international cuisine and more are part of the educational offerings. Groups are welcome. **115 North College Avenue, Suite 014 • 812-333-7100 • www.bloomingtoncookingchool.com**

### Butler Winery

Established in 1983, Butler Winery specializes in wines made from locally-grown grapes as well as a variety of truly outstanding fruit wines. At the vineyard, just nine miles northeast of Bloomington, you can sample and purchase wines in a picturesque country setting or enjoy a glass on the patio. A second tasting room is located on College Avenue. Complimentary tasting daily. **Vineyard: 6200 East Robinson Road • 812-332-6660 • In-Town Tasting Room: 1022 North College Avenue • 812-339-7233 • www.butlerwinery.com**

### Oliver Winery

Oliver Winery, Indiana's oldest and largest winery, offers daily tasting of over 35 varieties of award-winning wines. They feature dry reds, fruit wine and wines from the Creekbend Collection – distinctive wines made from locally-grown grapes. Shop for gourmet food items and gifts in the retail store, enjoy a picnic by the pond and stroll through the gardens. Complimentary weekend tours on Friday, Saturday and Sunday. **8024 North State Road 37 • 812-876-5800 or 888-26-TASTE (82783) • www.oliverwinery.com**

### Scholar's Inn Bakehouse

A Bloomington culinary tradition, the Bakehouse has long provided baked goods to local shops and restaurants. Tour the production facility and warehouse outlet and observe the creation of some of the best breads in Indiana. Groups are welcome; please call ahead to schedule a tour. **573 West Simpson Chapel Road • 812-935-6300 or 877-768-3974 • www.scholarsinn.com**

### Upland Brewing Company

Founded in 1998, Upland Brewing Company (UBC) is the largest micro-brewery in southern Indiana, and Upland's Wheat Ale is the best selling beer brewed in Indiana. Upland's beer is available all over Bloomington and you can visit the Tap Room and Beer Garden for food, a "sampler" of their award-winning beers and a free brewery tour. Tours are conducted every Saturday and Sunday from 3-5 pm. **350 West 11th Street • 812-336-BEER (2337) • www.uplandbeer.com**

## Performance Art

Check the event calendar at [visitbloomington.com](http://visitbloomington.com) for a listing of upcoming performances. Additional venues are listed in the Indiana University section of this guide.

### Players Pub

This pub has been around for many years in different incarnations, but has finally developed into must-see venue. The Player's Pub, located near the corner of Walnut and Second Streets, is one of the most popular music venues in town, offering live music every night of the week. The lineup varies from acoustic singer/songwriters to jazz orchestras to hopping blues bands. The atmosphere is low-key but the dance floor is always full. It's not the typical college-town nightclub, but a casual pub for enjoying a beer, some good grub and some exceptional music. **www.theplayerspub.com**



PHOTO BY DAVID RUST



### The Gordon Bonham Blues Band

Gordon Bonham has been fronting this local blues band for over 15 years and they haven't lost any mojo along the way. With fellow band mates Jeff Chapin, Dave Wyatt and Tom Harold, the group creates a rocking blues sound that makes the audience want to dance all night. They play the classics- Muddy Waters, Buddy Guy, B.B. King- and throw in a few originals too, all with a lot of guitar and heavy harmonica. The band performs regularly throughout the region, including shows at The Players Pub and Oliver Winery (pictured above). **www.gordonbonham.com**

### Bloomington Playwrights Project

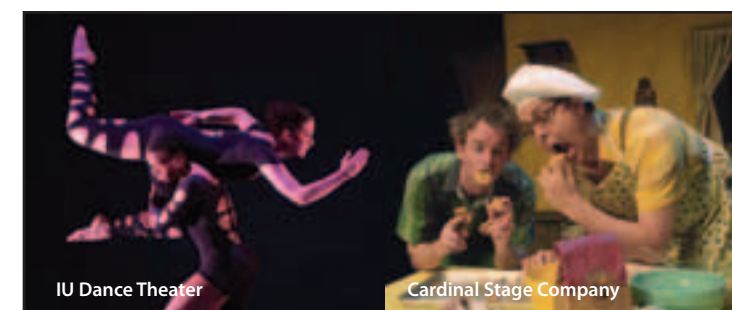
You'll find innovative and entertaining theatre experiences at the BPP- the only professional theatre in the state of Indiana focused solely on new plays. The BPP offers a year-round schedule of engaging shows written by renowned playwrights as well as top-notch education programs. Bold, edgy, original – the BPP has something for you! **107 West 9th Street • 812-334-1188 • www.newplays.org**

### Buskirk-Chumley Theater

Listed on the National Register of Historic Places, this 88-year-old Spanish mission revival silent movie house is one of the busiest community theaters in the country. As a high quality performance venue and community resource, the BCT hosts a year-round program of music, theatre, dance, film and community events presented by more than 50 organizations. **114 East Kirkwood Avenue • 812-323-3020 • www.buskirkchumley.org**

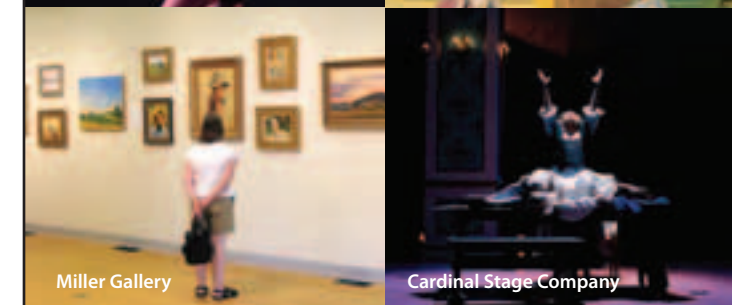
### Cardinal Stage Company

This local theatre company is dedicated to advancing professional theatre in Bloomington. Cardinal produces the classics, musicals, new works, shows for young audiences and the occasional curve ball. Cardinal Stage Company productions are highly theatrical, literate, and fun! **Performances at several area venues • Info: 812-366-7110 Tickets: 812-323-3020 • www.cardinalstage.org**



IU Dance Theater

Cardinal Stage Company



Miller Gallery

Cardinal Stage Company

## Ivy Tech John Waldron Arts Center

The Ivy Tech John Waldron Arts Center will offer more than 25 performances of theatre, dance, and music during the 2010-2011 Waldron Season. Additionally, the Ivy Tech Waldron will host over 10 gallery exhibits and 15 classes.

Whether it is education through the Ivy Arts for Kids program run by Ivy Tech's Center for Lifelong Learning, gallery exhibits of local or national artists, stage productions, or special events, our goal is to become Bloomington's premier space to perform, exhibit, entertain, and educate.

Visit our website for a performance schedule: **[ivytech.edu/bloomington/waldron](http://ivytech.edu/bloomington/waldron)**.

**BCTBOX OFFICE**  
Downtown Visitors Center

TICKETS • INFO  
RESTAURANTS • GALLERIES • MUSEUMS • PARKS • NIGHTLIFE  
THEATER • MUSIC • DANCE • FILM  
114 E KIRKWOOD AVE • (812) 323-3020 • WWW.BUSKIRKCHUMLEY.ORG

beats. eats. arts. digs. shops.

**BEAD**  
Bloomington Entertainment & Arts District

To make BEAD your next arts and entertainment destination, go to: [visitbead.com](http://visitbead.com)

**BPP** where theatre is born 2011

A captivating NEW musical  
Woodward/Newman Drama winner  
HIT Off-Broadway comic drama  
SIX THEATRE RUNS

Bloomington Playwrights Project | 334.1188 | [newplays.org](http://newplays.org) | 107 W 9th

Growing grapes & making Indiana wines for 27 years!

**Butler Winery**

Winery and Vineyard Tasting Room  
6200 E. Robinson Rd. 812-332-6660  
[www.butlerwinery.com](http://www.butlerwinery.com)

In-Town Tasting Room  
1022 N. College Ave. 812-339-7233  
Open 7 Days a Week

**Ivy Tech John Waldron Arts Center**  
Once City Hall, the Ivy Tech Waldron now houses downtown Bloomington's premier arts venue with two performance spaces – the Auditorium and the intimate Rose Firebay. The spaces are black box theaters, allowing for both traditional performances and experimental works. **122 South Walnut Street • 812-330-4400**  
[www.ivytech.edu/bloomington/waldron/](http://www.ivytech.edu/bloomington/waldron/)

**Summer Performing Arts Series**  
Enjoy Bloomington's finest talent with the Bloomington Parks and Recreation Summer Performing Arts Series featuring Tuesday lunch concerts in Peoples Park and concerts in several other area parks. These free concerts feature all types of music as well as performances by the Monroe County Civic Theater. Series runs from May through September (weather permitting). **Community Events Hotline • 812-349-3754**

**Theatre of the People**  
Theatre of the People is Bloomington, Indiana's inclusive performance arts and theatre education social service organization that nourishes and nurtures the "human value" of ensemble storytelling to benefit the greater public good. Enjoy a cutting-edge artistic experience. By the People and For the People, TOP is your community theatre. **812-369-2155**  
[www.theatreofthepeople.com](http://www.theatreofthepeople.com)



**Sylvia McNair**

Sylvia earned her masters degree from the IU School of Music before starting her amazing career as an opera star. She has traveled the world and performed with almost all of the major orchestras and opera houses. She is a two-time Grammy Award winner, has made over 70 recordings and continues to perform worldwide in operas, musical theater and cabarets. She is now a professor with the IU Jacobs School of Music, and performs special events and concerts in Bloomington.  
[www.sylviamcnair.com](http://www.sylviamcnair.com)



to find...calendar of events | unique attractions | hotels  
restaurants | shopping | festivals & events | live music  
everything you need to plan your visit to Bloomington

visit **bloomington**.com

**Did you know...**  
Bloomington was voted one of the top places to live in the U.S.  
*Mens Journal Magazine*



BIG CITY  
**Quality**  
SMALL TOWN  
**Welcome**



**INDIANA UNIVERSITY  
artmuseum**  
Fine Arts Plaza, 1133 E. 7th Street  
(812) 855-5445 • [www.artmuseum.iu.edu](http://www.artmuseum.iu.edu)



**Glenn A. Black Laboratory  
of Archaeology**  
423 North Fess Ave, Bloomington, IN 47408  
812-855-9544 • [gbl@indiana.edu](mailto:gbl@indiana.edu)  
[www.gbl.indiana.edu/](http://www.gbl.indiana.edu/)

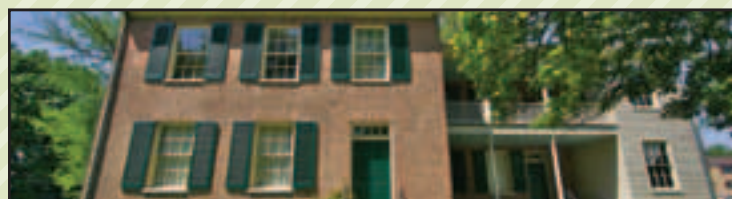


**WONDERLAB**  
THE MUSEUM OF SCIENCE,  
HEALTH AND TECHNOLOGY  
308 W. 4th Street  
(812) 337-1337 • [www.wonderlab.org](http://www.wonderlab.org)



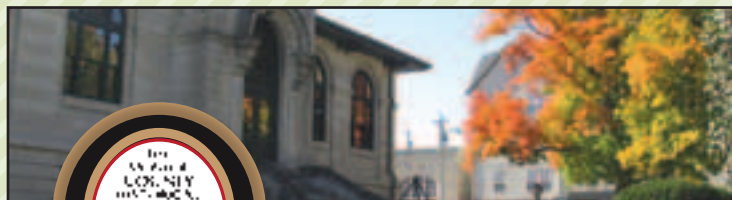
**The Kinsey Institute**  
For Research in Sex, Gender, and Reproduction

Morrison Hall 313, Indiana University  
(812) 855-7686 • [www.kinseyinstitute.org](http://www.kinseyinstitute.org)



**Wylie House Museum**

307 E. 2nd Street  
(812) 855-6224 • [www.indiana.edu/~libwylie](http://www.indiana.edu/~libwylie)



**Monroe County  
History Center**

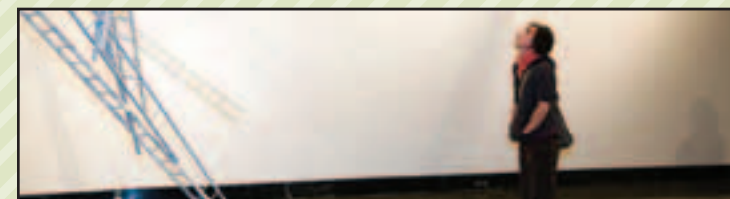
Museum • Genealogy Library • Museum Store  
Tuesday - Saturday 10am - 4pm • Closed Major Holidays  
202 E. 6th Street • (812) 332-2517 • [www.monroehistory.org](http://www.monroehistory.org)



**LILLY LIBRARY**

Fine Arts Plaza, 1200 E. 7th Street  
(812) 855-2452 • [www.indiana.edu/~liblilly](http://www.indiana.edu/~liblilly)

FOR MORE INFORMATION GO TO  
[visitbloomington.com/museums](http://visitbloomington.com/museums)



**SoFAGALLERY**

Fine Arts Building, 1201 E. 7th Street  
(812) 855-8490 • [www.indiana.edu/~sofa](http://www.indiana.edu/~sofa)



611 N. Walnut Grove  
(812) 855-7636 • [www.igs.indiana.edu](http://www.igs.indiana.edu)



**INDIANA UNIVERSITY  
ARCHIVES**

Herman B Wells Library E460, 1320 E. 10th Street  
(812) 855-1127 • [www.libraries.iub.edu/archives](http://www.libraries.iub.edu/archives)



**MATHERS MUSEUM OF  
WORLD CULTURES**  
INDIANA UNIVERSITY  
Bloomington

416 N. Indiana Avenue  
(812) 855-6873 • [www.mathers.indiana.edu](http://www.mathers.indiana.edu)



**Rhino's**

In a college town, it can be difficult to find an under-21 club. But for the last 18 years, Rhino's has been fulfilling that need, providing a hip place for young people to hear live music and participate in unique programs like video production, radio broadcasting and journalism. Located on Walnut Street, between Second and Third Streets, Rhino's features live music nearly every Friday and Saturday night. The lineup consists mostly of indie rock bands, and the admission fee is always low.  
[www.rhinosyouthcenter.org](http://www.rhinosyouthcenter.org)



**Bloomington Chamber Singers**

This choral group is made up of around 70 singers who perform major choral works during their annual concert series. The Bloomington Chamber Singers have been a fixture on the local music scene since 1980 and have developed into one of the region's premier choral ensembles. The group performs several times a year, usually between late fall and early spring at various locations.  
[www.chambersingers.info](http://www.chambersingers.info)